



TECHNICAL GUIDE **OPEN NOA 2017 XCO**

UCI Class 1, Elite Men and Women / Juniors Series

February 19, 2017

San Pedro de Colalao, Tucumán, Argentina





WELCOME

Noa Championship MTB reinvents himself and opens broadening their horizons. In 2017 will be a single date race and will be open to all who want to participate in it, whether or not from the Noa region.

It also goes a step further and becomes UCI Class 1 race for Elite Men and Women as a single category between Elite and U23 to score points for International Competitions UCI Ranking, very important for our athletes for the World Championships and World Cups. The Noa region, with Tucumán province as great bearer, gets to the forefront of regional competences and reinvents his championship placing it in the International Calendar so we will receive not only competitors from Noa region and the country but also from Latin America.

The circuit is located on the "Temple" of Mountain Bike Tucumano, San Pedro de Colalao, summer village, and it's called "The Branch of Heaven".

San Pedro de Colalao is located in the province of Tucumán, at a distance of 95 km from the capital, San Miguel de Tucumán using National Route 9. .

San Pedro has a maximum height of about 1100 mos. The tourist village is in a beautiful wooded region (valley) at the western foot of the Calchaquíes Summits. Calchaquíes Summits that constitute the Natural Park , the historic center of town is hovering above the gorge of the river Tipas .

It sports activities like horseback riding, mountain biking, hiking, etc are practiced, in his ideal environment.

The climate of the small valley of San Pedro de Colalao is very pleasant (mesothermal) with cold nights in winter (especially in July when it comes to snow) and gently warm in summer (January, with cool nights) and therefore deserves to be called Villa summer .

In San Pedro de Colalao during the summer (south) January is National Humita Festival , then in February the National Festival of Quesillo and the National Festival of the Nut , also in February (11 this month) celebrates the feast of Our Lady of Lourdes, and a mega dramatization of the life of St. Bernadette and the apparitions of the Virgin, in a natural setting that each year attracts faithful from across the country is made.

GENERAL INFORMATION

TECHNICAL GUIDE AND CONDITIONS OF PARTICIPATION

This technical guide covers procedures and information necessary to participate in the Noa Open 2017 UCI Class 1 (for Elite Men and Women) and Junior Series at San Pedro de Colalao on 19 February 2017.

IMPORTANT: in case of conflict between the information presented in this technical guide and any other sources of information (other than an official statement by the organization or the panel of Commissioners during the event), the information found in this technical guide will take as correct and final. By participating athletes leave express knowledge of this guide and regulations and regulations for which the event framed within the regulations FACIMO / UCI 2017 and penalties and regulations governing.

Sanctions and REGULATIONS.

UCI 2017 regulations shall apply for all categories.

VIOLATIONS TO THE RULES

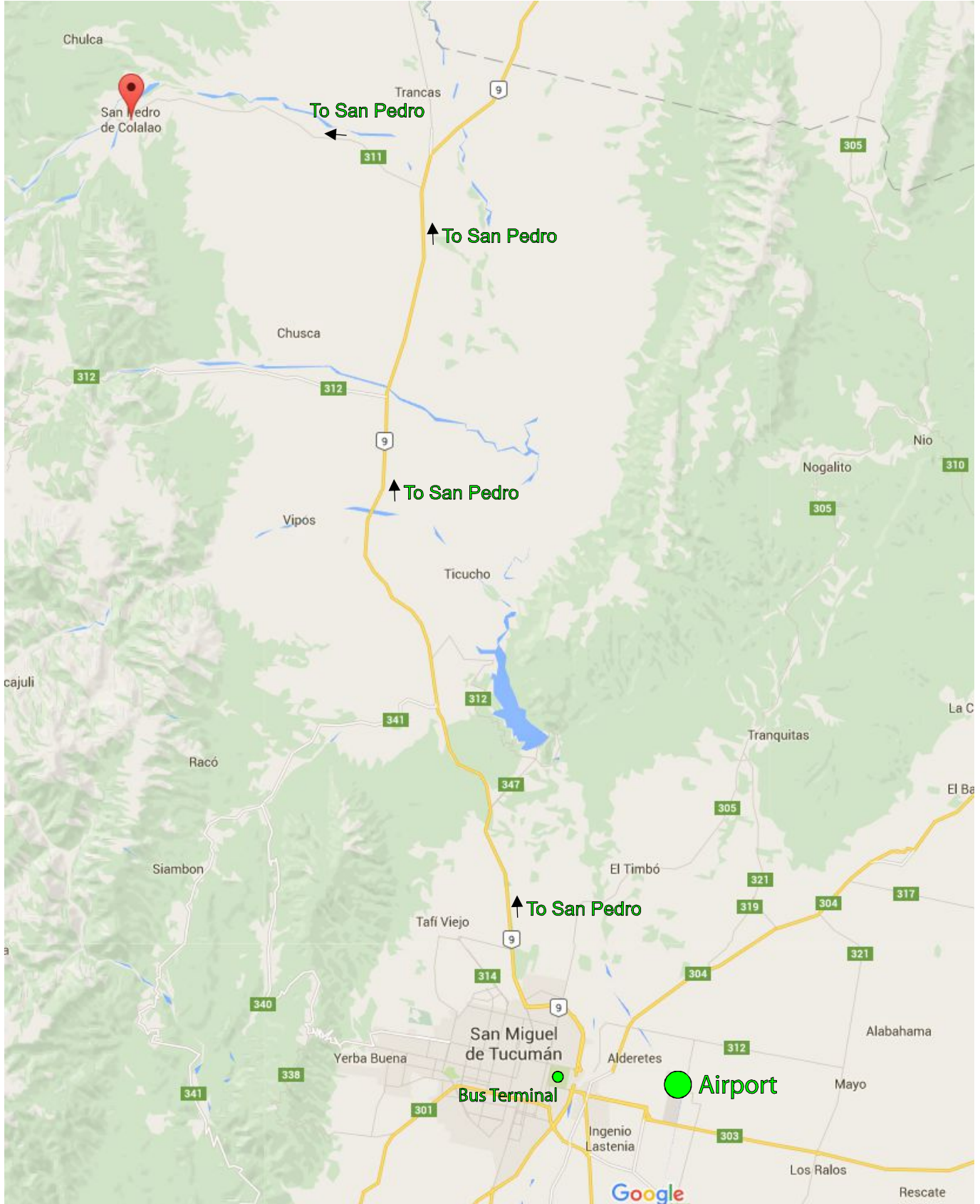
The offenses are those facts listed in the official race rules and sanctions are plausible as stated in Chapter 1, 4 and 12 of the UCI regulations.

GEOGRAPHICAL LOCATION

Tucumán is located in the north of the country, 1400km from BsAs, 600 Córdoba, Mendoza 900 and 380 of Salta.



GENERAL INFORMATION





GENERAL INFORMATION

HOW TO GET TO TUCUMÁN

By Air : Lieutenant General Matienzo International Airport

By Bus: Bus Terminal in San Miguel de Tucumán. San Pedro de Colalao SPL (Company).

By Road :

From Buenos Aires - > By Route 9 , Route 34 , Route 157, Route 9, Route Prov 311.

From Cordoba - > By Route 9 , Route 34 , Route 157 , Route 9 to Salta, Route Prov 311.

From Salta - > By Route 9, Route Prov. 311.

From Mendoza - > By Route 33 , Route 38 , Route 157, Route 9 to Salta, Route Prov 311.

ACCOMMODATION

As a summer village, San Pedro has a great hotel offer. All hotels are very close to the circuit, San Pedro web site is the one with the largest and most complete offers for hotels and information.

<http://www.sanpedroextremo.com.ar/>

<http://www.tucumanturismo.gov.ar/>

Cabañas:

<http://www.aqui-me-quedo.com.ar>

<http://www.complejo-lacanada.blogspot.com.ar/>

<http://www.intihuatanaposada.com/>

DISTANCES TO THE COURSE

From San Miguel de Tucumán -> approx . 90.7 km .

From Yerba Buena - > approx . 100km .

From the International Airport of Tucuman -> 148.1Km .

From Salta - > 266.9km .

From Termas de Rio Hondo (Santiago del Estero) -> 177.8Km .

HOW TO REACH THE COURSE

In Vehicle.

From San Miguel de Tucumán: for national route 9 north for 72Km, after passing the toll take the provincial route 311 to San Pedro . 2 Blocks from San Pedro main little park.

Public Transport to San Pedro de Colalao.

By bus line SPC . In the bus station ticket office 69.

REFERENCE altimetry .

San Pedro - > 1100 msnm (mos) .

San Miguel de Tucuman -> 450 msnm (mos).

GENERAL INFORMATION

CLIMATE IN SAN PEDRO.

The climate of the small valley of San Pedro de Colalao is very pleasant (mesothermal) with cold nights in winter (especially in July when it comes to snow) and gently warm in summer (January, with cool nights) and therefore deserves to be called Villa summer .

GROUND OF THE COURSE

You can travel safely in rain or muddy ground . The rain and mud are no problem for the practice of Mountain Bike and although rain is riding almost 95%.

TIME ZONE .

UTC - 3

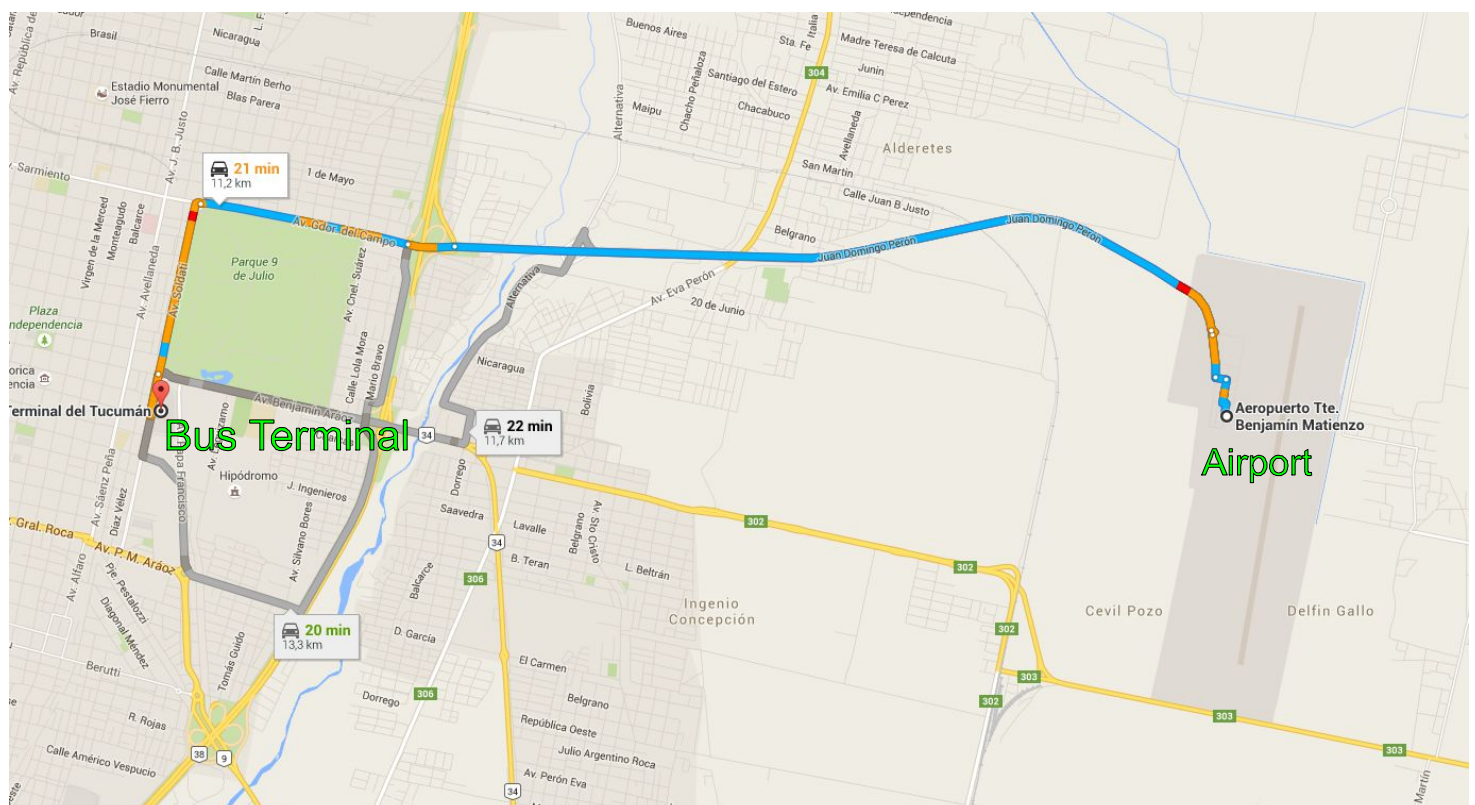
TELEPHONE AREA CODE

(+54) 381

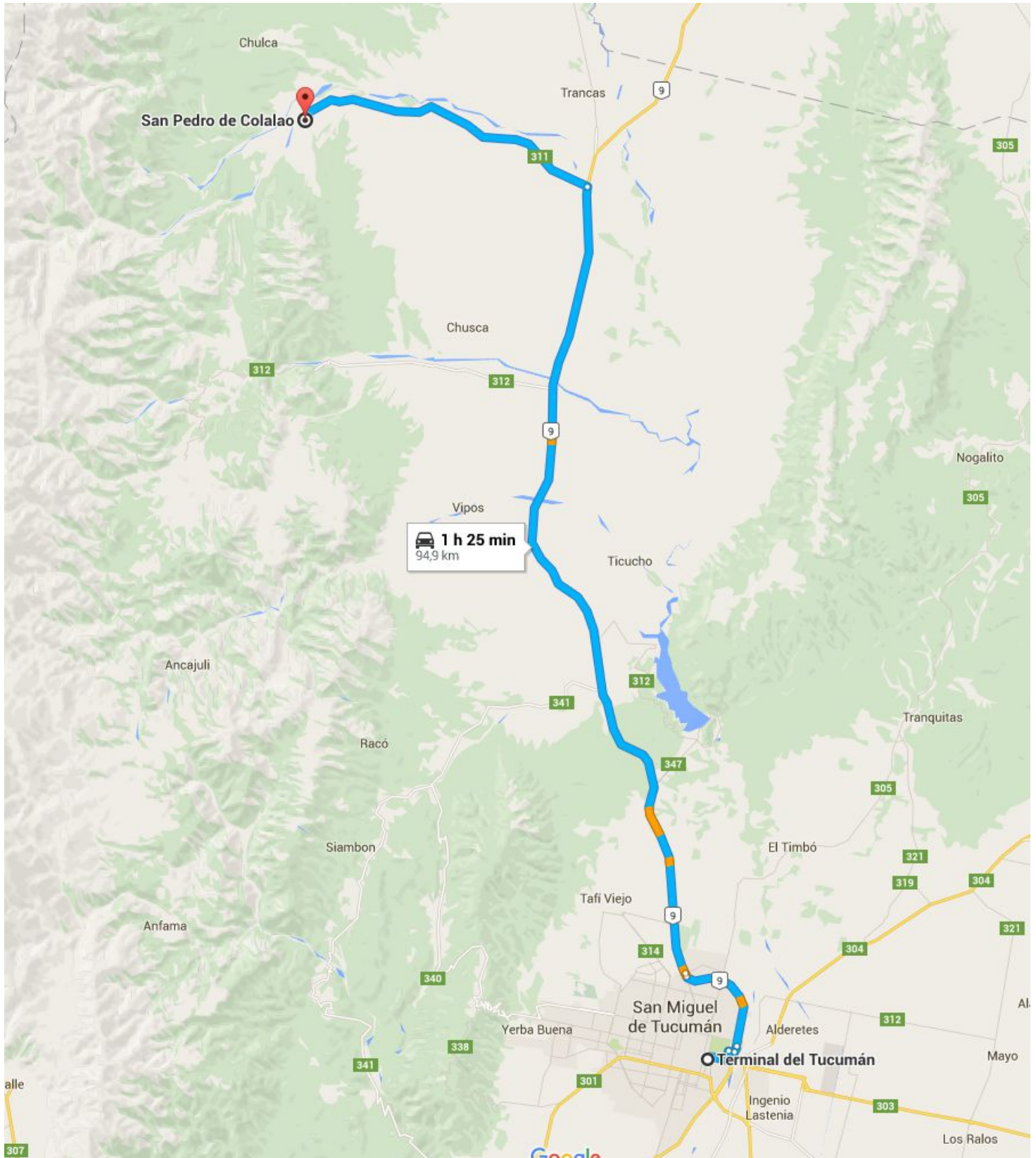
Useful information on San Miguel de Tucuman

<http://www.despegar.com.ar/turismo/tuc/san+miguel+de+tucuman/datos-utiles>

From the airport to the bus terminal in Taxi or Remis, 11.2Km (21 minutes aprox.) Is better to ask the cost before taken the taxi or remis, but is around \$a60.00.-



GENERAL INFORMATION



THE COMPETITION

THE COMPETITION.

Name of Event: Open Noa Championship XCO 2017 (Single Date) UCI Class 1 / Juniors Series.

Date: 19 February 2017.

Location: San Pedro de Colalao , province of Tucumán, Argentina .

Modality: XCO .

Category: UCI Class 1. Junior Series.

Circuit: Monte Bello.

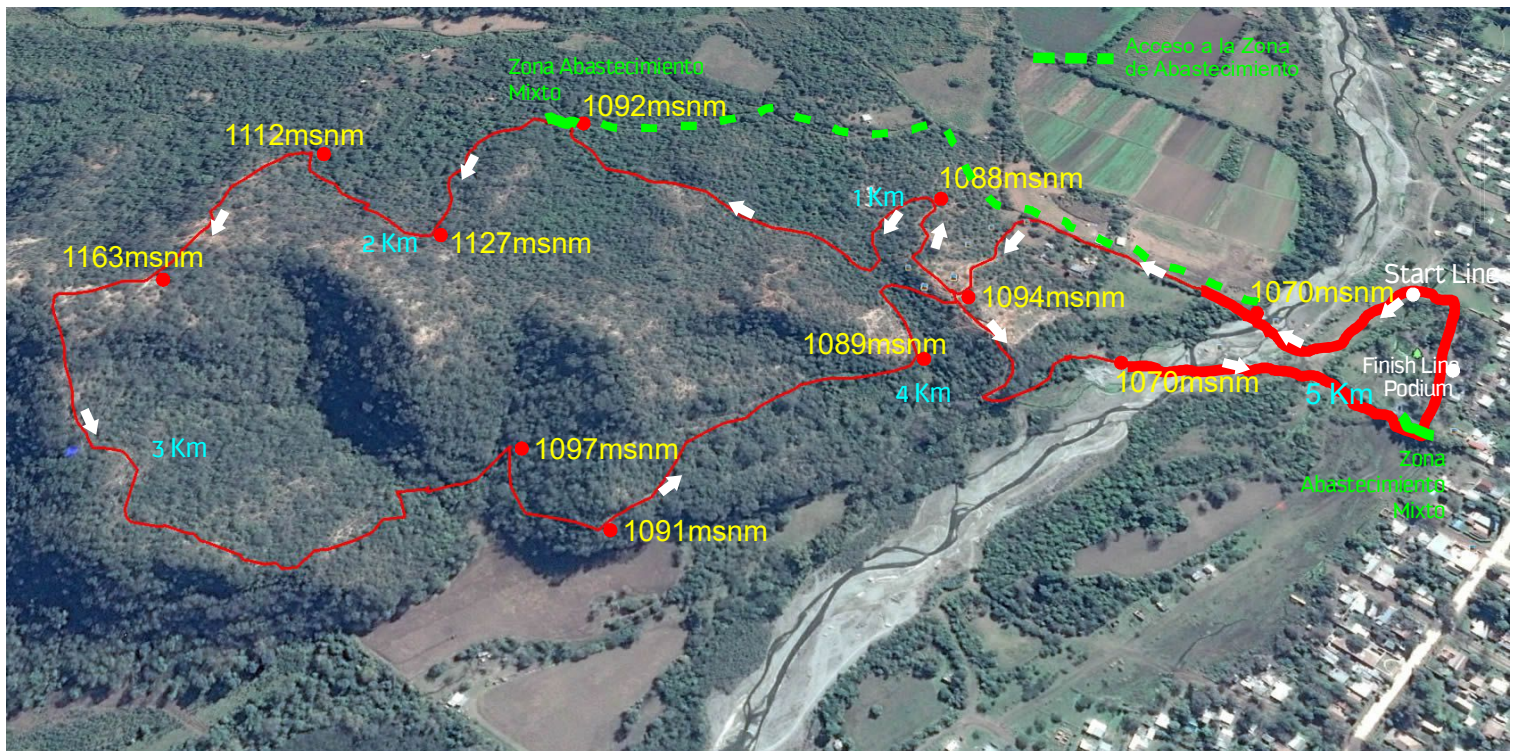
Distance : 5600 meters.

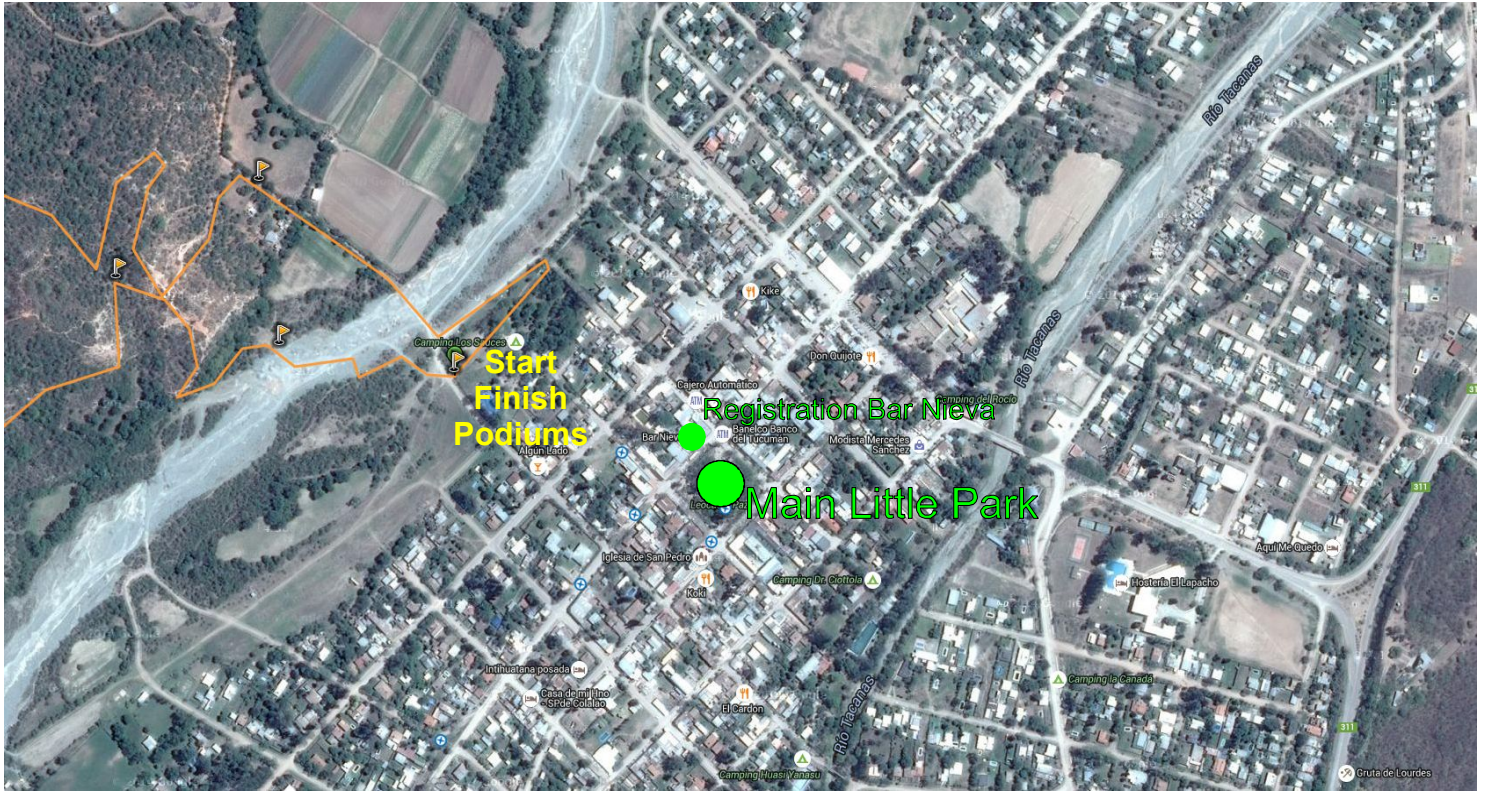
Start / finish / Podiums: In the area of the camping, right of entry to it . Very close to the street.

Feed Zones : 2 mixed zones (hydration and technical).

Zone 1 : Street after cross the river, 1000 mts before finish line.

Zone 2 : At Km 1,7 from the start line.





Start / Finish / Podium -> Camping Los Sauces.
Registration -> Bar Nieva





THE COMPETITION

REGISTRATION .

From 01.18.2017 until 02.14.2017 by www.inscripciondigital.com.ar

Days 02.17.2017 and 02.18.2017 in person at the Theater of San Pedro de Colalao.

Accreditations and DELIVERY OF PLATES .

Days 02.17.2017 and 02.18.2017 in person at the Theater, diagonal corner of the main little park.

POC (ocasional permission to compete) for local athletes idem place , days and times accreditations

STAFF - Organization contacts information

DIRECTOR: Miguel Kachurovsky . (381) 4179213 - mtbtc@live.com

CIRCUIT : Luis Galvez .

Timings : Pablo Rosales. (381) 6043884 - trasmontania@gmail.com

Accreditations and REGISTRATION: Betty Kachurovsky . (381) 4354775 .

COMMUNICATION AND SECURITY: Fire Department Lules - Gendarmerie .

CATEGORIES

Categories	From	To	Years
Elite (+ U23 para clasificación UCI)	19	29	19 a 29
Sub23	19	22	(Just for Noa Championship - Will be split after the race)
Juveniles	17	18	
Cadetes	15	16	
Menores	13	14	
Master A1	30	34	
Master A2	35	39	
Master B1	40	44	
Master B2	45	49	
Master C1	50	54	
Master C2	55	59	
Master D1	60	64	
Master D2	65	75	
Damas Elite (+ U23 para clasificación UCI)	19	29	19 a 29
Damas Sub23	19	22	(Just for Noa Championship - Will be split after the race)
Damas Juveniles	17	18	
Damas Cadetes	15	16	
Damas Menores	13	14	
Damas Master A	30	39	
Damas Master B	40	75	
Infantiles B	11	12	
Infantiles A	9	10	
Pre Infantiles	8		
Mosca	7		
Mosquitos	6		



THE COMPETITION

CALL UP ORDER .

For categories ELITE (+ U23) according to UCI Ranking XCO . Athletes who have no UCI points in order of registration.

For other categories , Noa Champion 2016 and registration.

Important: To qualify , the category should have at least 3 competitors. If they dont have 3 athletes the category is declared and registered null and they pass to the superior categories in competition.

UCI POINTS AWARDED.

The points assigned according to UCI regulations for competitions Class1 type .

UCI Class 2 (Categories UCI Elite [Elite + U23])

Rank	Men	Rank	Women
1	60	1	60
2	40	2	40
3	30	3	30
4	25	4	25
5	20	5	20
6	18	6	18
7	16	7	16
8	14	8	14
9	12	9	12
10	10	10	10
11	8	11	8
12	6	12	6
13	4	13	4
14	2	14	2
15	1	15	1

MONEY PRIZES ELITE (+ U23) UCI Class 1 regulations.

Class 1 America Latina (will be paid in \$a).

Rank	Elite M/W	JS M/W
	Euros	Euros
1°	€480 (\$8200)	€104 (\$1800)
2°	€400 (\$6800)	€80 (\$1400)
3°	€320 (\$5400)	€64 (\$1100)
4°	€240 (\$4100)	€52 (\$890)
5°	€200 (\$3400)	€44 (\$750)
6°	€160 (\$2700)	€36 (\$620)
7°	€120 (\$2050)	€32 (\$550)
8°	€100 (\$1700)	€24 (\$400)
9°	€80 (\$1400)	€20 (\$350)
10°	€40 (\$700)	€16 (\$280)



THE COMPETITION

AWARDS for all categories

Medalls from 1^a al 5^a.

CAMPEON ABIERTO NOA XCO 2017 Jersey.

SAFETY.

The area is safe , you do not have private security or police. Hotel security is not responsible for the security of the event . So we recommend to take care of belongings.

PARKING .

Inside the Camping Los Sauces the parking areas, which can be used . It is prohibited to park on the street entrance to the camping to avoid accidents and cuts the route of entry.

Event SCHEDULE

Friday 17 from 10.00 to 13.00 and from 15.00 to 18.00 training for all categories.

Friday 17 from 10.00 to 13.00 and from 15.00 to 18.00 registration at the Theater of San Pedro de Colalao.

Saturday 18 from 10.00 to 13.00 and from 15.00 to 16.30 training for all categories.

From 16.30 to 18.00 horas Official Training for Elite categories only men and womens (Elite and U23 FACiMo categories).

Saturday 18 from 10.00 to 13.00 and from 15.00 to 18.00 registration at the Theater of San Pedro de Colalao.

Saturday 18 17:00 hrs All infants categories.

Sunday 19.

08.15 hrs. Call up to the boxes categories Master A1, A2, Cadetes, B1, B2, C1, C2, D1, D2, Menores, Damas Master A y B, Damas Menores y Damas Cadetes

08.30 hrs. Competitions categories Master A1, A2, Cadetes, B1, B2, C1, C2, D1, D2, Menores, Damas Master A y B, Damas Menores y Damas Cadetes

10.20 hrs. Podium Ceremony first competition.

10.45 hrs. Call up to the boxes categories UCI Elite Hombres y Damas (Elite y Sub23 según categorías FACiMo), Juniors Hombres y Damas.

11.00 hrs. Competitions categories UCI Elite Hombres y Damas (Elite y Sub23 según categorías FACiMo), Juniors Hombres y Damas.

12.50 hrs. Podium Ceremony.

13.00 hrs. Close All.



THE COMPETITION

COMMISSAIRES

President of the Commissaires Panel.: Felipe Pimpao (Brasil).

Start Judge. Julio Garcia.

Official Timing: LaMaquinadelTiempo.com.ar - Pablo Rosales.

Near Hospital and First Aid.

CAPS San Pedro de Colalao..

Hospital San Pedro de Colalao.

ANNEXE A

REQUIREMENTS.

- License UCI / FACiMo (2017) of the country it represents and passport or photo ID or document.
- By FACiMo available only local athletes (other than Elite or U23) can participate with a Permit Seasonal Competition (POC) should NOT be licensed.
- For the UCI competition rules shall apply in all respects and regulations from the time the athlete arrives to the circuit or the competition zone. For his good behavior is recommended during the times of the official schedule in all common areas, circuit, hotels, bars and restaurants, etc.
- It is recommended to take seriously the regulations and rules imposed by the UCI / FACiMo.
- The organization is not liable for payment of services or stay in the accommodation.
- The organization will provide emergency medical care for accidents.
- To turn on the track at the official timetable is a necessary requirement to be registered and have put the plate on the bike at all times.